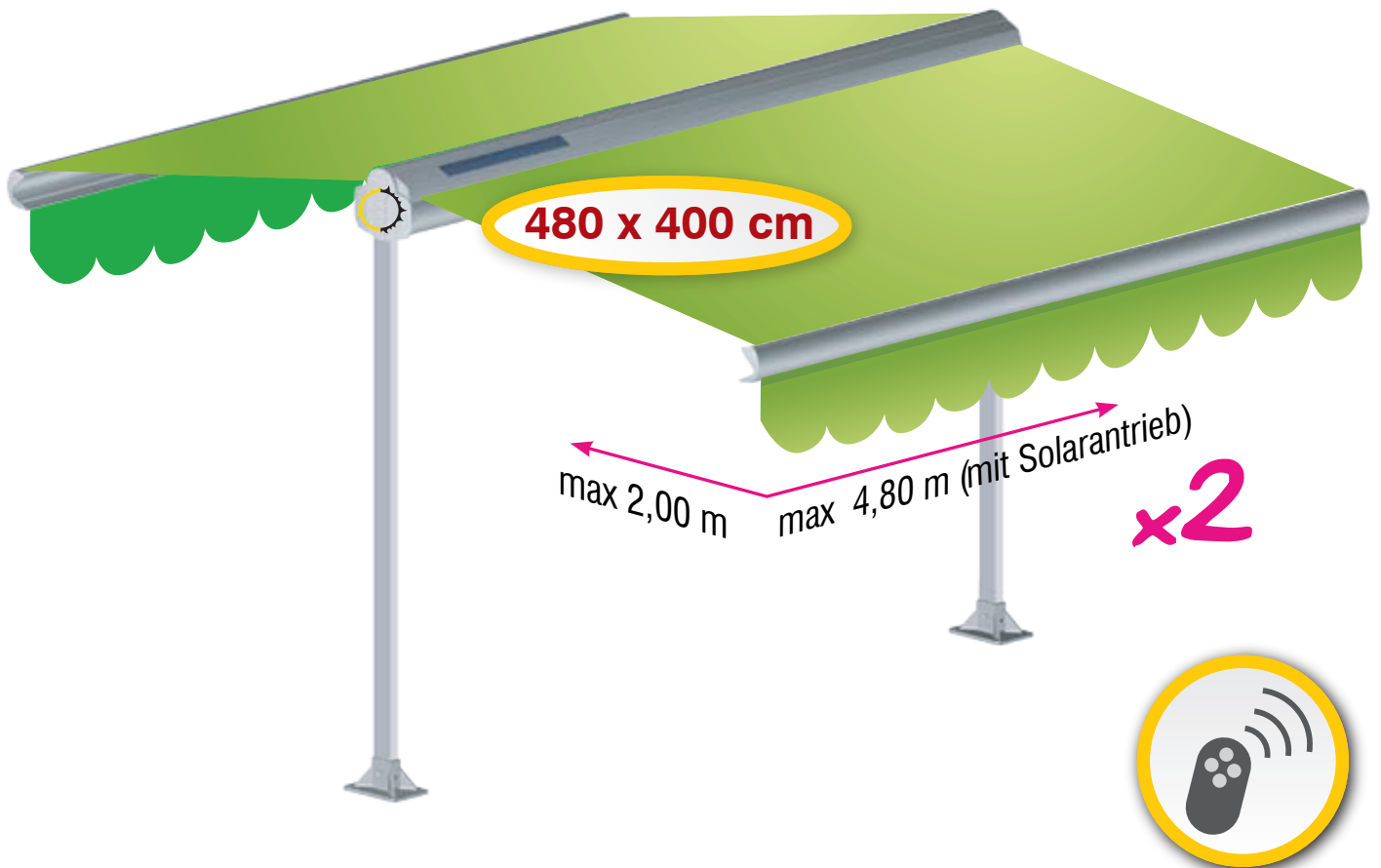
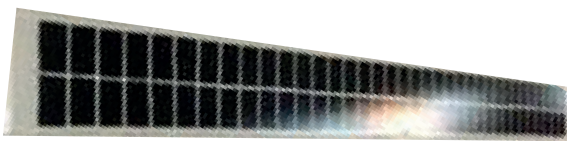


freistehende Dual-Markise solar

kabellose Montage

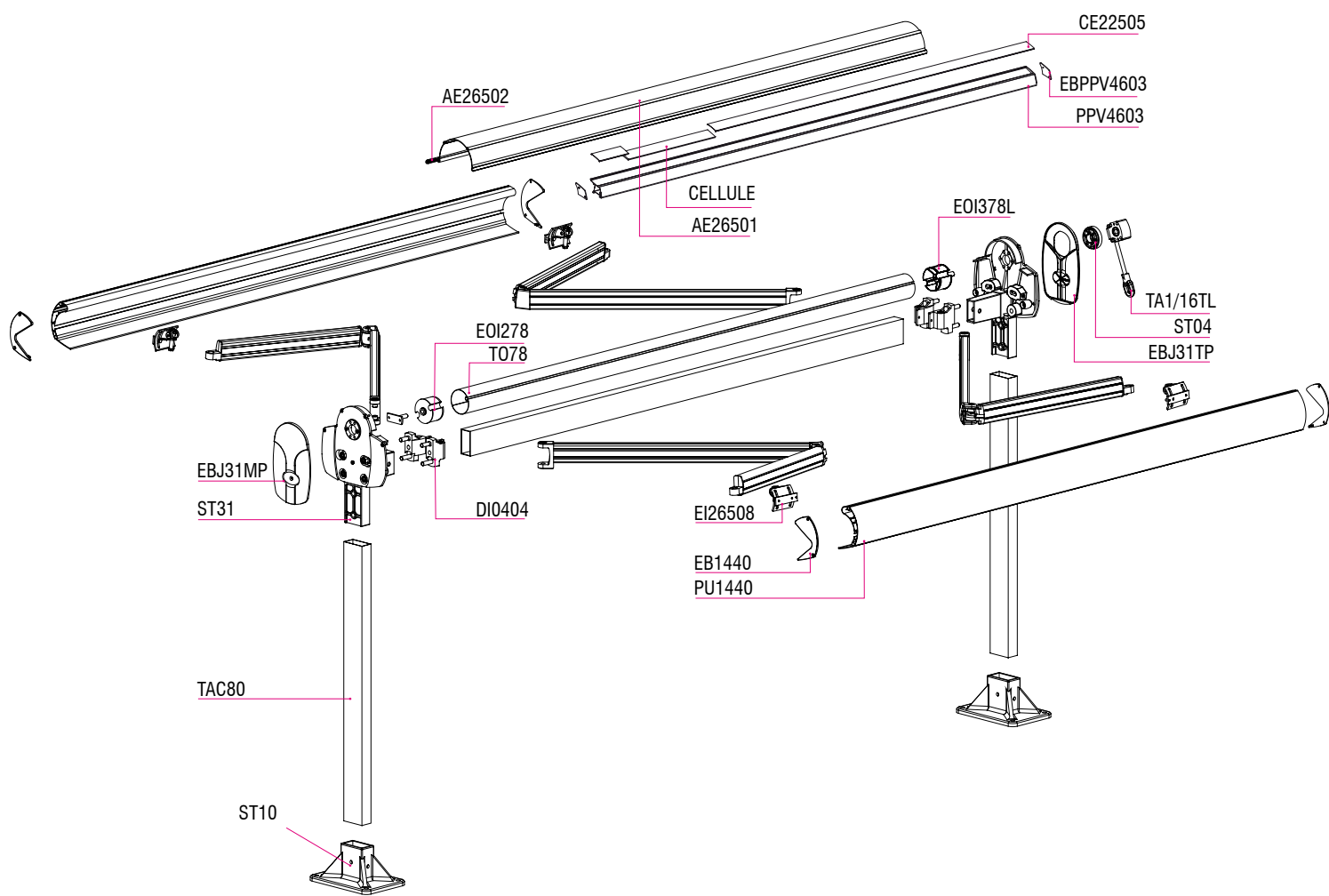


Solarpaneel



eingefahren





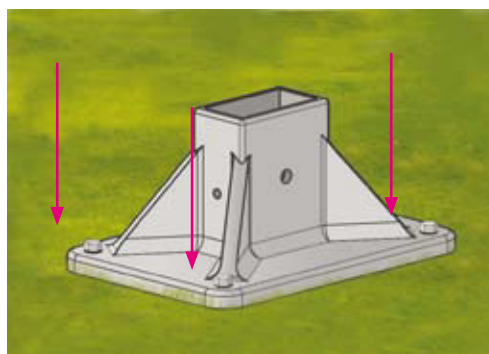
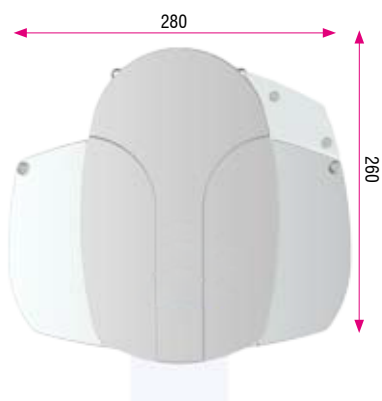
ABMESSUNGEN

► Solarantrieb

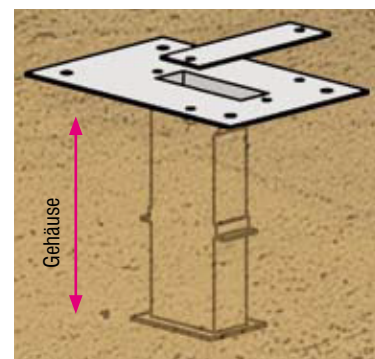
max. Breite: 4,8 m
 max. Ausladung: 2,0 m x 2

► Motorantrieb

max. Breite: 5,8 m
 max. Ausladung: 3,0 m x 2



zum Verschrauben



zum Einbetonieren